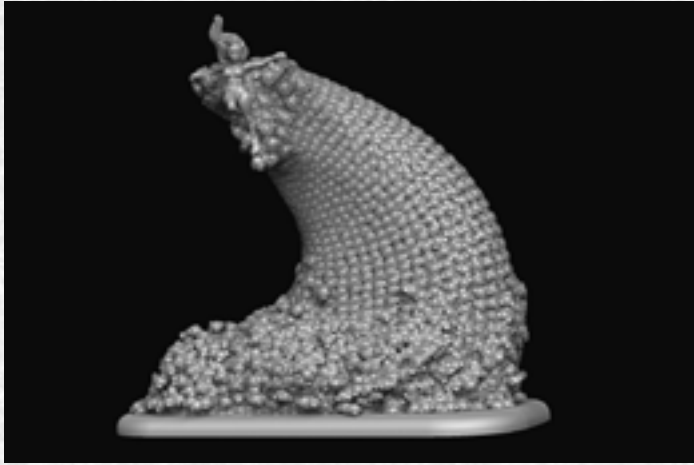


MEDUSA

- EXPERIMENTAL RULES 1.2



While little that is known of PHR Siren corps, one thing is very clear; these women are the elite, and exceptionally few in number. However even among the rarest individuals there are exceptional specimens – those whose innate affinity with their technological enhancements allow them to effortlessly control many hundreds of viewpoints with ease, and many thousands with dedicated training and further honing of their talents.

These are the Medusae, the 0.0001 % of the PHR's population capable of harnessing the power of thousands of slaved Familiars to their will with devastating effect. In battle, a Medusa will appear to 'fly', levitated on a swarming, seething pillar of nanomachines and Familiars,

sowing destruction and aiding her allies in combat until the enemy is utterly destroyed.

MEDUSA	A	MV	CM	DP	PTS	TYPE	CATEGORY	CQB	F	S+C	SPECIAL
	1	9	E+3	10	100	INFANTRY	EXOTIC	1	2+	1, STANDARD	RARE, DF, DODGE 3+

WEAPONS	E	SH	AC	R(F)	R(C)	MF	ARC	SPECIAL
BLACK NANOMACHINE SURGE	7	10	2+	9"	9"	9"	F/S/R	ALT-1, FOCUS-2, STRAFE, RW-1
WHITE NANOMACHINES**	N/A	1	1+	9"	9"	9"	F/S/R	ALT-1, IF

Transport: 1 x Triton-X Dropship (1 unit each)

* **Special Rule - Levitated:** This unit may move over terrain/buildings under 6 inches high. It does not count as an aircraft while doing so.

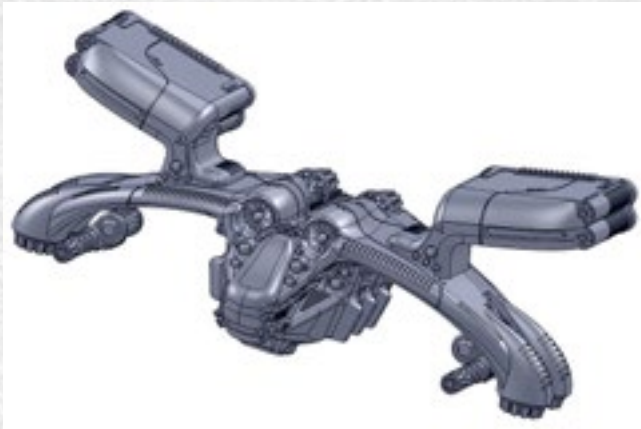
** **Special Rule - Drone command:** Once per turn, when the Medusa is within 6" of a building and not embarked in a transport or structure, one friendly infantry squad in that building may gain an additional 5 dice to their CQB pool.

*** **Special Rule - White Nanomachines:** This ability counts as a weapon shot and follows all the normal rules for weapons (Line of Sight etc). It normally hits on a 1+ (i.e. automatically) and may only be fired against damaged friendly Units. Its accuracy may be modified by such things as command cards and indirect fire in the usual way. A successful hit replaces 1 lost Dp from the target Vehicle Unit.

PHR UNITS

TRITON X

- EXPERIMENTAL RULES 1.2



The Triton-X is a specially modified transport for Medusa units. The fact that the PHR has created a specific transport to carry these exceptional women into the fray reflects their immense power. It also has the capacity for additional nanomachines, which can replenish and repair any losses that the Medusa's swarm might sustain from enemy fire.

TRITON X	A	MV	CM	DP	PTS	TYPE	CATEGORY	S+C	LZ	SPECIAL
	6	20	A	2	40	AIRCRAFT	TRANSPORT	T, WIDE	SMALL	N/A

WEAPONS	E	SH	AC	R(F)	R(C)	MF	ARC	SPECIAL
BLACK NANOMACHINE WAVE	10	1	3+	12"	12"	10"	F/S/R	IF, ALT-1
REPAIR NANO MACHINE WAVE*	N/A	1	1+	9"	9"	10"	F/S/R	IF, ALT-1

Can upgrade to miniguns for +3pts

***Special Rule - Repair Nano Machine Wave:** This ability counts as a weapon shot and follows all the It normally hits on a 1+ (i.e. automatically) and may only be fired against the Medusa that it was bought as a transport for, additionally the Medusa must be damaged. Its accuracy may be modified by such things as command cards and indirect fire in the usual way. A successful hit replaces 1 lost Dp from the target Medusa Unit.